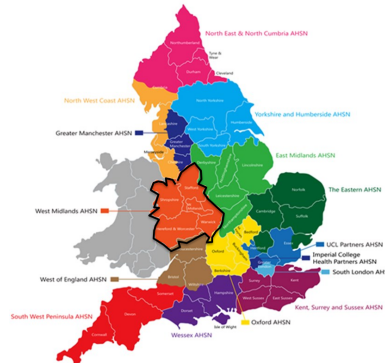


WEST MIDLANDS ACADEMIC HEALTH SCIENCE NETWORK ON A PAGE



About us

Academic Health Science Networks (AHSNs) were established to support the spread of innovation across the NHS in England and align clinical research, informatics, training, education and healthcare delivery in their respective regions, with the twin objectives of improving healthcare and generating wealth. AHSNs are regional assets which support delivery of the NHS Five Year Forward View, the recommendations of the Francis Report, the government's Accelerated Access Review and the Carter Review.



Through our opportunities process, networks and services, we speed up and promote regional adoption of beneficial innovation into practice to deliver greater patient satisfaction, better clinical outcomes and economic benefit. With 15 AHSNs across England, collectively, we offer a means to spread innovation further.

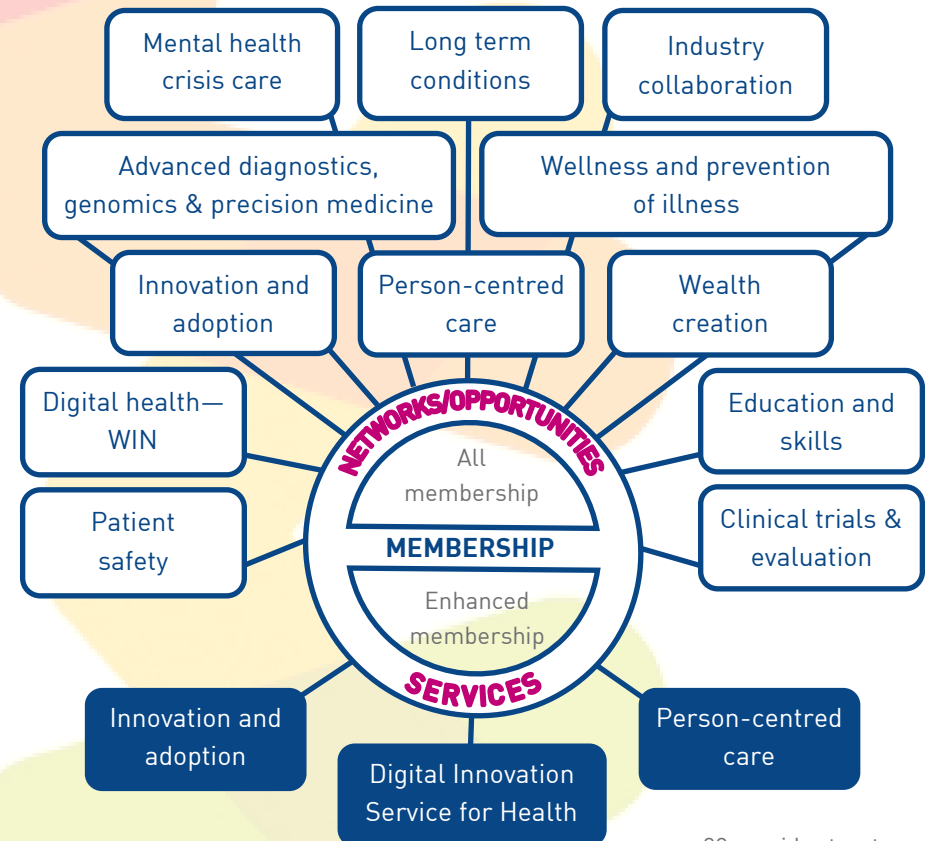
Our long term vision

Our long term vision is for a healthier region in which there is high patient satisfaction and equitable access for all to high quality, efficient, effective, person-centred care.

Our contact details

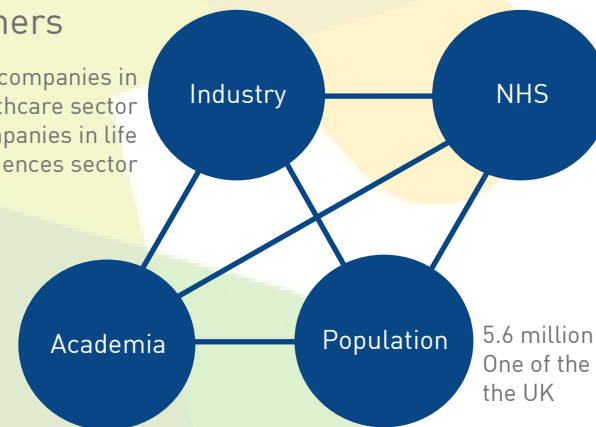
Address: West Midlands Academic Health Science Network, Institute of Translational Medicine, Heritage Building, Queen Elizabeth Hospital, Mindelsohn Way, Birmingham B15 2TH
 Telephone: 0121 371 8061
 Email: info@wmahsn.org
 Website: www.wmahsn.org
 Twitter: [@wmahsn](https://twitter.com/wmahsn)

Our membership networks, opportunities and services



Our partners

1000+ companies in medical/healthcare sector
 600+ companies in life sciences sector



12 universities with healthcare studies
 3 universities (soon 4) with medical schools

28 provider trusts
 22 CCGs
 1 ambulance trust
 c975 GP practices
 c700 dental practices
 1 Clinical Senate/SCNs
 1 LCRN
 1 NIHR CLAHRC

5.6 million people
 One of the most diverse regions in the UK