

# Knowledge and Innovation Communities (KICs)

What are they?

Dr Andrew Roadnight  
WMAHSN Reference Group  
2 April 2015

# Horizon 2020 Drivers

- Innovation Union: a more dynamic and competitive EU
- Translating R&D into commercial opportunities and jobs
- 3% of the EU's GDP should be invested in R&D
- Lack of innovation and entrepreneurialism (SMEs)
- Better/more co-operation between science and business
- Smart, sustainable, inclusive growth

# EIT

“The European Institute of Innovation and Technology aims to enhance Europe’s ability to innovate, which translates into adapting quickly to the fast pace of development, being one step ahead in providing solutions to rapidly emerging societal problems and developing products that meet the demands and desires of consumers.

“Europe is facing a significant innovation challenge, where despite an excellent research base, dynamic companies and creative talent, good ideas are too rarely turned into new products or services. Europe needs a real change of mind-set towards the promotion of a more innovative and entrepreneurial culture.”

<http://eit.europa.eu/about-us/>

# KICs: what are they?

- “Highly integrated, creative and excellence-driven transnational partnerships”: typically with six Co-Location Centres (CLCs)
- Knowledge triangle: research, higher education, and business  
OR  
knowledge pyramid: through “place”?
- Initial seven year award renewable for a further seven years after review; eventual self-sustainability
- Funding:
  - EIT: 25%
  - Non-EIT sources: 75%

# KICs: what do they do?

- Produce new innovations and new innovation models
- Bring new products and services to market
- Education and training: Masters, PhDs, CPD/skills development, entrepreneurial training
- Encourage and support start-ups/business development
- Networking and collaboration opportunities
- Income generation
- Influencing EU policy

# KICs: the programme

## **2010**

Climate KIC

EIT ICT Labs

KIC InnoEnergy

## **2014**

EIT Health

Raw Materials

## **2016**

EIT Manufacturing

EIT Food

## **2018**

EIT Urban Mobility

# KIC: some numbers

- 230+ partners (50% business; 30% academic; 20% public & not-for-profit) in 6 CLCs
- 50+ projects creating innovative products/services (2013-14)
- 20 new products launched (2013-14)
- 45 start-ups have raised €59m with Climate KIC help
- 133 business ideas incubated
- 32 start-ups created



# EIT Health KIC

(Formerly InnoLIFE KIC)



Dr Paddie Murphy

WMAHSN Reference Group



# EIT Health = 53 partners over 6 CLCs



# Challenges and business objectives

- Promote healthy living
  - Self management of health
  - Lifestyle intervention
- Support active ageing
  - Workplace intervention
  - Overcoming functional loss
- Improve healthcare
  - Improve healthcare systems
  - Treating and managing chronic diseases

# Cross challenges

- Removing barriers to innovation
- Leveraging talents and education
- Enabling technologies and exploiting big data

# WMAHSN as the vehicle for the delivery of the KIC

- Regionally representative regional body
- Spread of stakeholders maps onto the KIC stakeholders
- Maps onto WMAHSN priorities (see later) .....

# EIT Health: West Midlands impacts

- A more competitive WM health sector, including business start-ups, able to quickly translate research, products, services and treatments to the UK, European and global markets
- A highly skilled workforce, receptive to innovation with an entrepreneurial mind-set working on key health challenges
- A more involved, informed and healthier WM population, able to live and work longer through healthier living, improved treatments and the availability of enabling technologies
- An affordable, sustainable and equal regional healthcare system through increased efficiency and better integrated patient pathways

# EIT Health WM strategic outcome 1: quality of life

(WMAHSN theme or clinical priority)

- *Living environments for longer active Lives* (Prevention, healthy living)
- *Personalised technology and models for health management* (Digital health, Mental health, Medicines adherence/optimisation)
- *Empowered carers and patients* (Education and workforce of the future, Patient experience)

## EIT Health WM strategic outcome 2: sustainability of healthcare systems

(WMAHSN theme or clinical priority)

- *Cost-efficient integrated care* (Integrated care, Long term conditions)
- *Leveraging enabling digital technologies and exploiting big data* (Digital health and open data)
- *Demand-driven skills and competences* (Education and workforce of the future)

# Types of *KIC-able* innovation projects

- Innovation by ideas projects “AHSN push” solution driven (14 in total EU-wide projects in 2016 )
- Innovation by design projects “AHSN pull” needs driven (7 in total EU-wide projects in 2016)
- Head start SME pilots “AHSN SME innovation fund and industry gateway” (25 in total EU-wide projects in 2016)



# Rationale for EIT Health innovation project support

- Existing project or programme that requires additional investment in order to translate or adopt an innovation in to a market or into service
- Needs to work with minimum of two other EIT Health partners across Europe to share best practice or explore translation in to other EU markets
- Level of intervention:  
75% funded by the project or programme partners,  
25% from EIT Health

In effect, EIT Health provides an 25% uplift on what you are doing already

# Examples of innovation projects or programmes that may be *KICable*

Age Friendly West Midlands, CETAL-H, Health Innovation and Entrepreneurship Summer School, CURe, Query Workbench, Simple Telehealth/Flo, StarT Back, RAID, Youth Space, making a difference with diabetes, medically unexplained symptoms, Genomics Medicine Ambassador Programme etc ...

# How will the other EIT Health structures be applied in WM?

- Health Accelerator
- Living Labs
- STELLAR



# EIT Health KIC WM

The WM Health Accelerator  
Approach

# The EIT Health Accelerator

- A centralised EU (Virtual Network) that brings together best practice in business development, entrepreneurship training/support, SME growth support, business start up, incubation, ideation, proof of concept funding, VC and Angel Investment.

# The WM Health Accelerator

- BDO network - region-wide network of University and NHS, business development officers?
- Entrepreneurship training and support examples include Innovation Engine (Health) , Creative Digital Health Solutions, HDTI Coventry University, Medilink West Midlands, ABIA Birmingham University

# The WM Health Accelerator

- SME growth support examples include Medilink West Midlands, Innovation Engine (Health), Creative Digital Health Solutions, HDTI Coventry University, ABIA Birmingham University
- Business start up and incubation examples include Icentrum, Innovation Birmingham, The Bio Hub Birmingham University, Institute of Digital Health at Warwick University, Keele University Science and Business Park, Warwick Science Park, Malvern Science Park

# The WM Health Accelerator

- Ideation existing examples include Birmingham Science City's Innovative Healthcare Group, Medilink West Midlands, Innovation Engine (Health), Creative Digital Health Solutions, HDTI Coventry University, West Midlands Health Informatics Network, WM Health 2.0 network
- Proof of concept funding existing examples WMAHSN SME health innovation fund, AHSN Small Business Research Initiative



# The WM Health Accelerator

- VC and Angel Investment examples include MIDVEN, Mercia



# EIT Health WM

The WM as a Living Lab

# WM Living Lab Concept

*EIT Health will engage with individual Living Labs, Test Beds and Demonstrators*

- The innovative approach the WMAHSN is proposing is an entire UK Regional population based approach to a “EIT Health Living Lab”
- This will be achieved by linking all our existing trialling, testing, modelling, evaluation and research centres to provide a diverse regional population based living lab offer, to the whole of EIT Health KIC industrial, clinical and academic communities
- The benefit to WM will be increased business for the centres and early access to new products and therapies for citizens

# Centres engaged in the WM Living Lab

- Examples include Institute of Translational Medicine, Institute of Digital Health, WM Clinical Research Network, WM Genomics Medicine Centre, Medical Device Evaluation Centre, BHP Clinical Trials Research Unit, National Health Technology Co-Operative for Trauma, National (SR) Trauma Medical Research Centre, National Centre for Defence Medicine, Collaboration for Leadership and Applied Health Research and Care (CLAHRC WM)



# EIT Health WM

The WM STELLAR approach

# STELLAR

**SPARK:** Sparks comprise a portfolio of short courses, internships and summer schools that impart transferrable skills in innovation and entrepreneurship.

**TRANSFORM:** The Innovation Fellowship promotes cross-disciplinary, professional development. Designers and social scientists will work with health professionals and engineers to solve problems in hospitals, care institutions or companies.

**EMBRACE:** Embrace will embed innovation and entrepreneurship into programmes of higher education. The plan is to launch novel academic programmes from 2016: the new MSc in Healthcare Innovation, the PhD-MBA in Health/Life Science Innovation and the Business PhD in Metabolic Health

**LEAD:** Leading Business Schools in Europe will join forces with the Health KIC ageing research and education centres to develop short and intensive training for public and private executives in programmes such as strategic management in healthcare systems (including health economics)

**LEAP:** Connects education in open learning environments and communication to improve the programmes and to engage in dialogue with citizens. This will be achieved by using digital game-based learning, self-assessment of health through virtual reality environments and patient simulations or open Educational Resources and Massive Open Online Courses (MOOCs).

**AMPLIFY:** WM Health EIT will enable KIC Alumni to participate in the training and coaching of new students and professionals. Alumni will make matchmaking happen and widen the impact made by each individual.

**REWARD:** Is a career-promoting incentive scheme for students and teachers. It is also a branding tool. Prizes and vouchers will reward outstanding efforts in entrepreneurship by students and teachers.



# EIT Health WM

Next steps

# Examples

- Home technologies – French CLC call for expressions of interest
- Company in UK node sponsoring initiative at Coventry
- Horizon 2020 bids

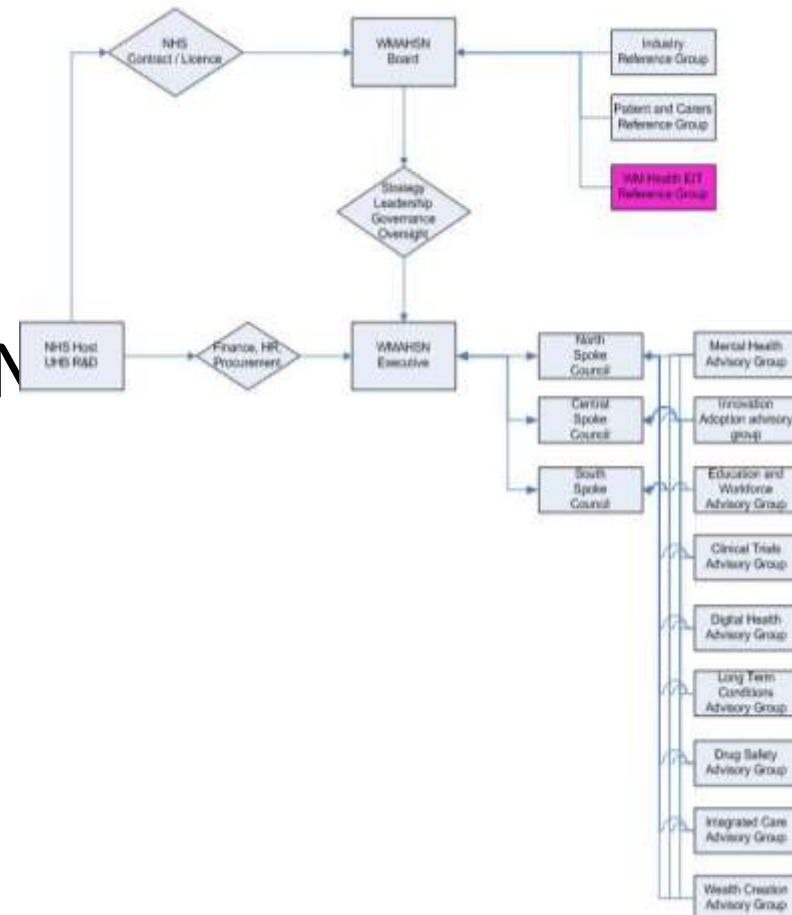


# Next steps

WMAHSN provides the Year One contribution of £50K to EIT Health on behalf of its WM members, as part of their overall membership service for next year.

# Next steps

WMAHSN adopts the interim bid group as an AHSN reference group that's part of its overall governance structure



# EIT Health WM Reference Group

Chair Tony Davis WMAHSN

## Members

Andrew Roadnight UoW

Hilary Fanning UHB

Theo Arvanitis IDH/AHSN

Safina Mistry BCC

Nicola Bryant Digital Birmingham

Bethan Bishop HEFT

Sinead Ouillion CCC/CU

Simon Fielden HDTI/CU

Pam Waddell BSC

Janet Lord UoB

Helen Griffiths UoA

WM Public Health ?

## Executive

WMAHSN secondees

Paddie Murphy WMAHSN / PLMCS

Claire Potter WMAHSN/ UoB

Susannah Goh WMAHSN/ BSC



# EIT Health WM

Thank you