

# National Child Parent Screening (CPS) pilot project



west midlands  
ACADEMIC HEALTH SCIENCE NETWORK

## Aim

To implement novel strategies to increase current population prevalence of familial hypercholesterolaemia (FH) from 4.7% to 25% in line with the NHS Long Term Plan (LTP).

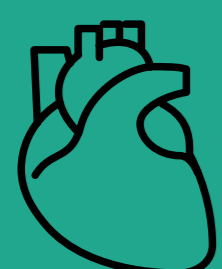
## What we will do



Child-parent screening (CPS) involves a heel prick blood test during a child's routine one-year immunisation appointment, as a method of identifying children and their parents with FH, and to support cascade testing to identify other relatives with FH.



The West Midlands AHSN, with the support of the West Midlands Familial Hypercholesterolaemia Service (WMFHS) is 1 of 7 AHSNs participating in this 24-month pilot project (complete in Dec 23).



More timely diagnosis of FH allows for earlier treatment with lipid lowering therapies, leading to a reduction in premature coronary artery disease and subsequent reduction in cardiovascular events.



Identified individuals will follow an agreed pathway with specialised input through a referral to the WMFHS.



It is unlikely that population screening of adults alone will help attain the target stipulated. The CPS pilot will help to determine whether such a systematic approach can be commissioned in the longer term to support the NHS Long Term Plan ambition to increase population prevalence of FH.



## Our approach



### We have invited

primary care networks (PCNs) and practices to participate in a national service evaluation project.



### To date

two live practices within the West Midlands have so far screened 29 children and have conducted one negative genetic test since commencement in December 2021.

Find out more about the Child Parent Screening pilot project here:

<https://bit.ly/38EvNUt>



Led by:

Academic Health  
Science Network  
North East and North Cumbria



pace and scale  
IMPLEMENTATION AND ADOPTION